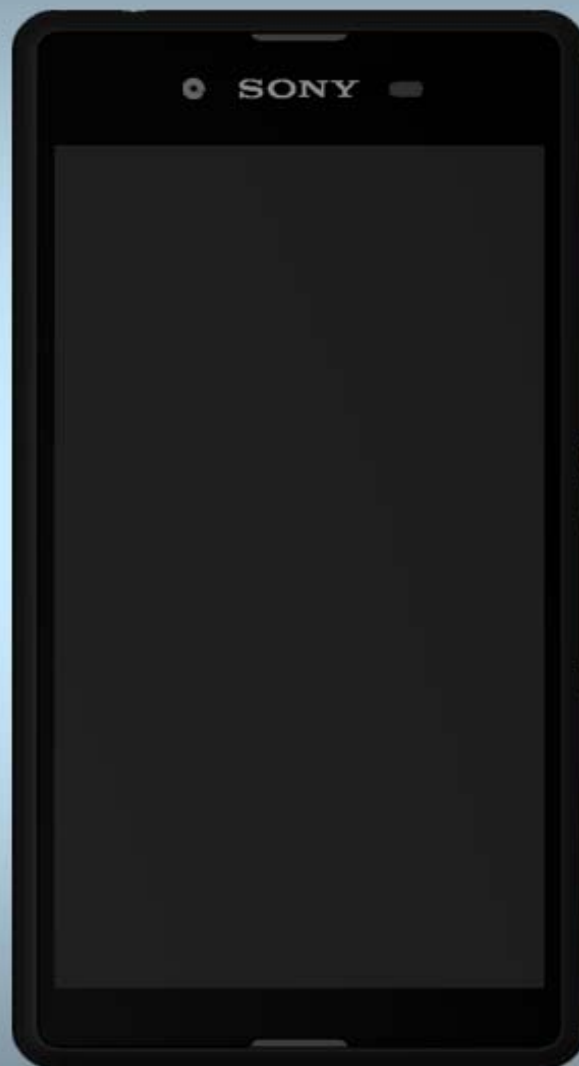


# Component Replacement

- electrical -



**Xperia™ E3**

**D2202, D2203, D2206, D2212**

**CONTENTS**

1 Replaceable Components ..... 3

2 Component Placing..... 5

3 Additional Repair info ..... 6

4 Revision History ..... 11

*For general information about electrical repair related issues, refer to 1220-1336: Generic Repair Manual - electrical*

*Test after electrical replacement: refer to 1273-1772 Mechanical Test Instruction*

*Do not remove shield can lids (Heat pasta are added and RF performance will be damaged)*

## 1 Replaceable Components

### EXPLANATION OF ABBREVIATIONS USED IN THE COLUMN 'COMMENTS' BELOW

#### **COMPONENT LOCATION**

**P** = Primary side

**S** = Secondary side

#### **REPAIR METHOD**

**HA** = Hot Air (removal & mounting)

**ST** = Soldering Tool (removal & mounting)

**HA/ST** = Hot Air for removal - Soldering Tool for mounting

**BGA** = BGA Station

**BH** = Bottom Heater

#### **ADDITIONAL INFORMATION**

⇒1 (2,3,4, etc.) = Proceed to 'Additional Repair Info' for further instructions in the indicated section(s).

Position	Component for Rex D2206	Part no.	Comments
J801	EAR PHONE JACK CON.	A/314-0000-00889	P HA+BH or BGA ⇨1
J900	MICRO SIM CON	A/314-0000-00890	S HA+BH or BGA ⇨2
J901	MICRO SIM CON	A/314-0000-00890	S HA+BH or BGA ⇨2
J902	MICRO SD CON	A/314-0000-00880	S HA+BH or BGA ⇨3
J1000	Micro USB Connector	A/314-0000-00905	P HA+BH or BGA ⇨4
J1002	Battery Connector	A/314-0000-00818	S HA+BH ⇨5
J1402	WIRE TO BOARD CON.	A/314-0000-00887	P HA+BH ⇨6
J2000	Connector Coax Receptacle 1p test switch	A/314-0000-00282	S HA+BH ⇨7
J2001	RF CONNECTOR WITH SWITCH_4 pin	A/314-0000-00825	S HA+BH ⇨8
J2100	Connector Coax Receptacle 1p test switch	A/314-0000-00282	S HA+BH ⇨9
J2101	Connector Leaf Spring Plug 1p Antenna	A/314-0000-00659	S HA+BH ⇨10
J2102	Connector Leaf Spring Plug 1p Antenna	A/314-0000-00659	S HA+BH ⇨10
J2103	Connector Leaf Spring Plug 1p Antenna	A/314-0000-00659	S HA+BH ⇨10
J2300	Connector Coax Receptacle 1p test switch	A/314-0000-00282	S HA+BH ⇨11
J2301	Connector Leaf Spring Plug 1p Antenna	A/314-0000-00659	S HA+BH ⇨12
J2302	Connector Leaf Spring Plug 1p Antenna	A/314-0000-00659	S HA+BH ⇨12
J2400	SPRING CONNECTOR	A/314-0000-00550	S HA+BH ⇨13
J2401	SPRING CONNECTOR	A/314-0000-00550	S HA+BH ⇨13
LED1501	LED Flash	A/309-0000-00251	S HA+BH ⇨14
SPR1501	SPRING CONNECTOR	A/314-0000-00550	P HA+BH ⇨15
SPR1502	SPRING CONNECTOR	A/314-0000-00550	P HA+BH ⇨15
SPR1503	SPRING CONNECTOR	A/314-0000-00550	P HA+BH ⇨15
SPR1504	SPRING CONNECTOR	A/314-0000-00550	P HA+BH ⇨15
SPR1505	SPRING CONNECTOR	A/314-0000-00550	P HA+BH ⇨15
SPR1506	SPRING CONNECTOR	A/314-0000-00550	P HA+BH ⇨15
SW1401	Switch Tact	A/315-0000-00082	S HA+BH ⇨16
U800	Microphone	A/312-0000-00067	S HA+BH ⇨17



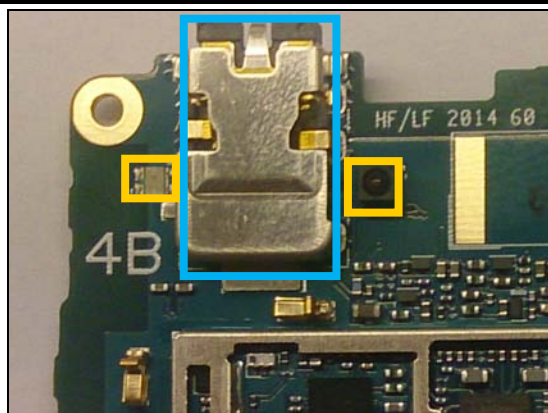
### 3 Additional Repair info

1

J801

**Replace if mechanical damaged. (No or bad audio in headset)**

**Protect the LEDs with capton tape!**

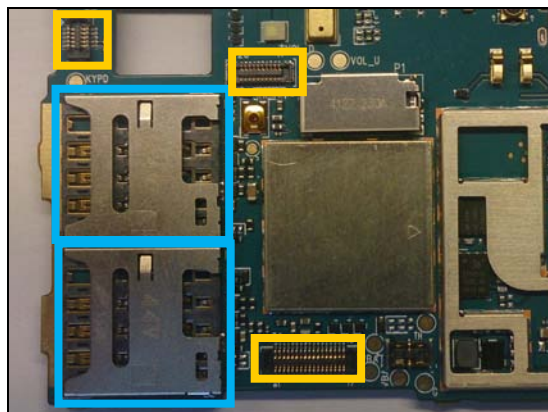


2

J900, J901

**Replace if mechanical damaged. ( SIM not inserted)**

**Protect the BtB connectors with capton tape!**

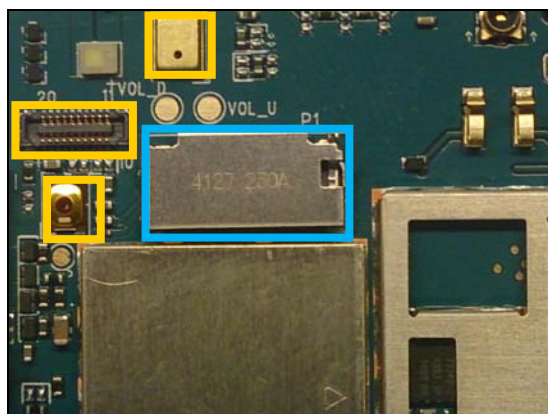


3

J902

**Replace if mechanical damaged. (No SD card inserted)**

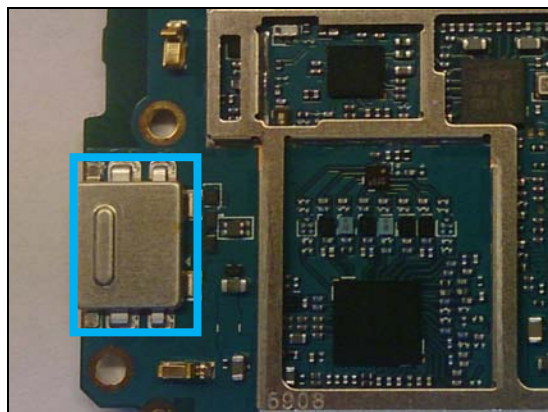
**Protect the ear BtB connector, 2 mic and reset switch with capton tape!**



4

J1000

**Replace if mechanical damaged (USB charger or data transfer not working)**





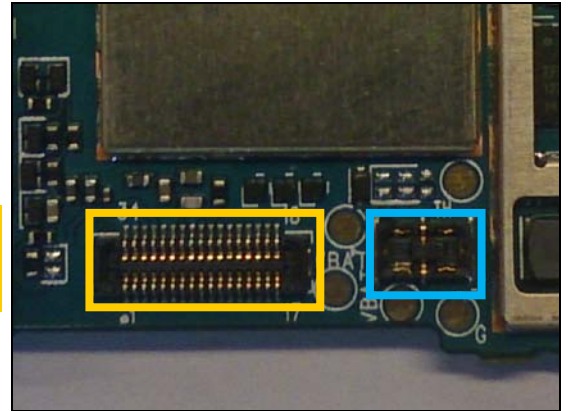
## Repair Actions: Additional Repair Info

**5**

**J1002**

**Replace if mechanical damaged. (Phone dead or power off)**

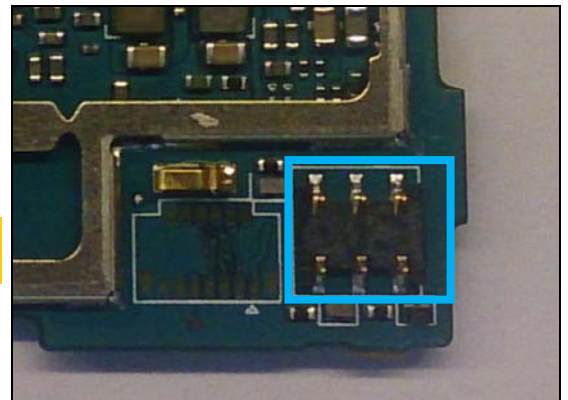
**Protect the BtB connector with capton tape!**



**6**

**J1402**

**Replace if mechanical damaged. (Volume Up/Down not working)**

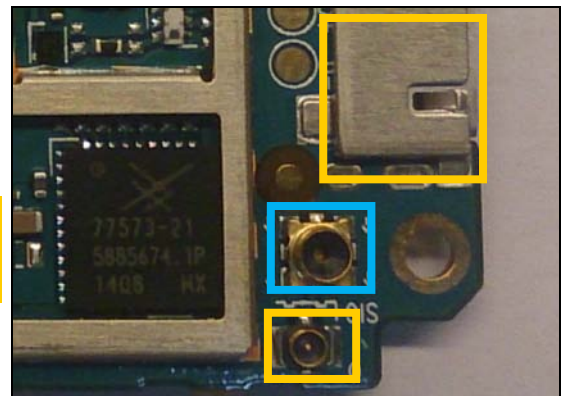


**7**

**J2000**

**Replace if open circuit 1-2 (No or bad network, main antenna)**

**Protect the USB and RF connectors with capton tape!**

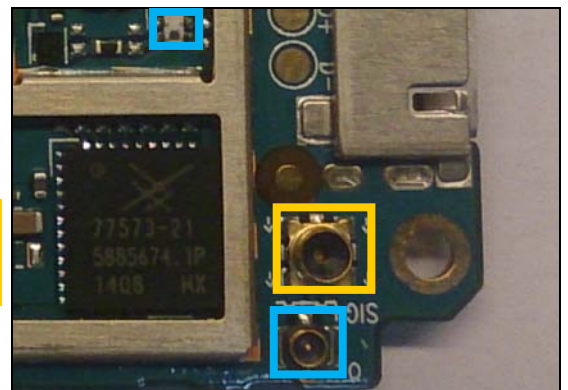


**8**

**J2001**

**Replace if mechanical damaged (No or bad network, main antenna)**

**Protect the RF connector with capton tape!**



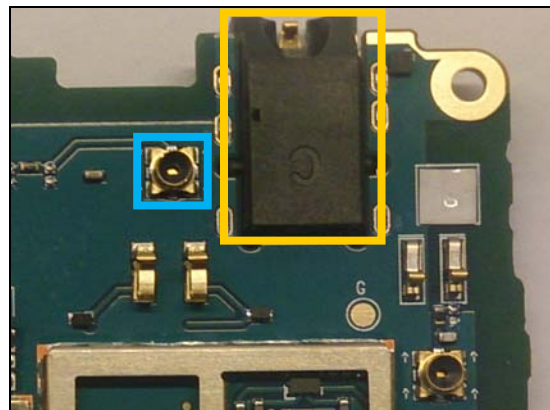
## Repair Actions: Additional Repair Info

9

J2100

*Replace if open circuit 1-2 (No or bad network, diversity antenna)*

*Protect the Audio connector with capton tape!*

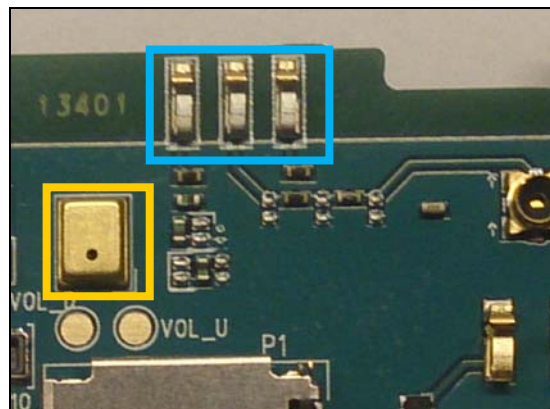


10

J2101, J2102, J2103

*Replace if mechanical damaged (No or bad network, diversity antenna)*

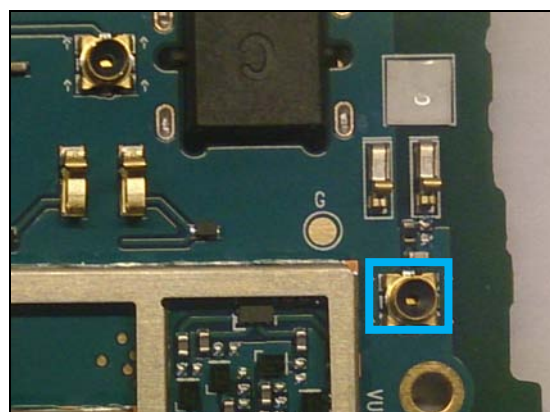
*Protect the 2. mic with capton tape!*



11

J2300

*Replace if open circuit 1-2 ( No or bad WLAN/ BT)*

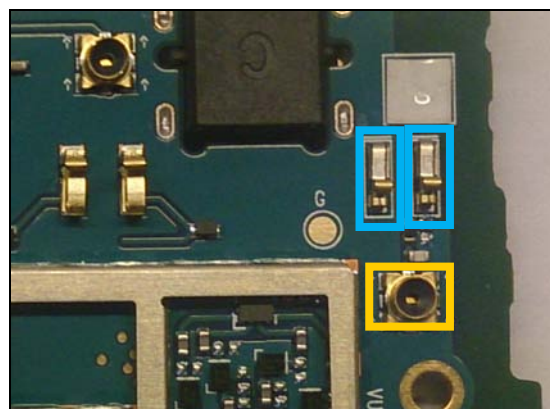


12

J2301, J2302

*Replace if mechanical damaged ( No or bad WLAN/ BT)*

*Protect the RF connector with capton tape!*



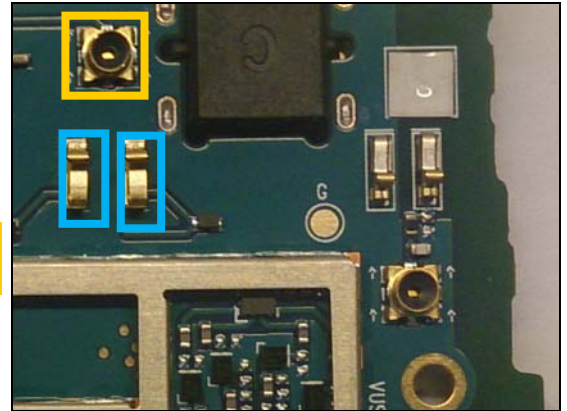


## Repair Actions: Additional Repair Info

**13**

**J2400, J2401**

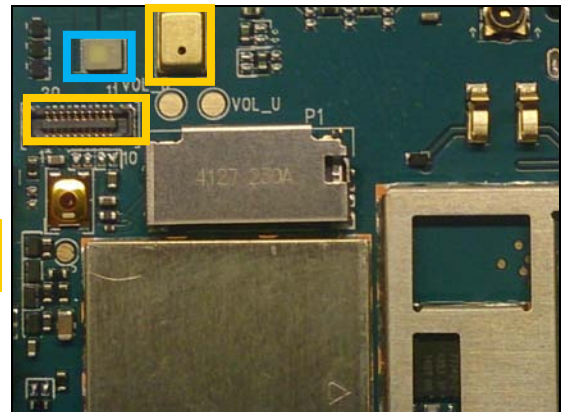
*Replace if mechanical damaged (No or bad NFC)  
Protect the Rf connector with capton tape!*



**14**

**LED1501**

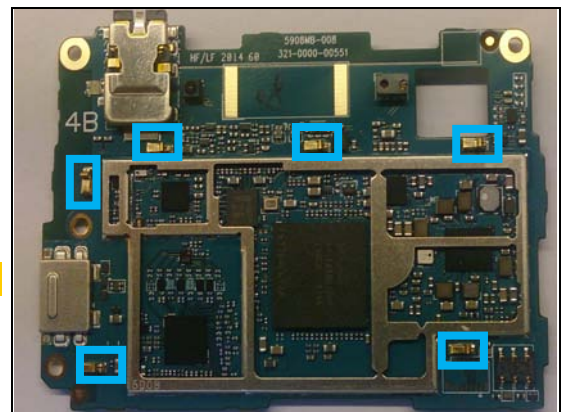
*Replace if Flash LED not working.  
Protect the BtB connector and 2 mic with capton tape!*



**15**

**SPR1501, SPR1502, SPR1503, SPR1504, SPR1505  
SPR1506**

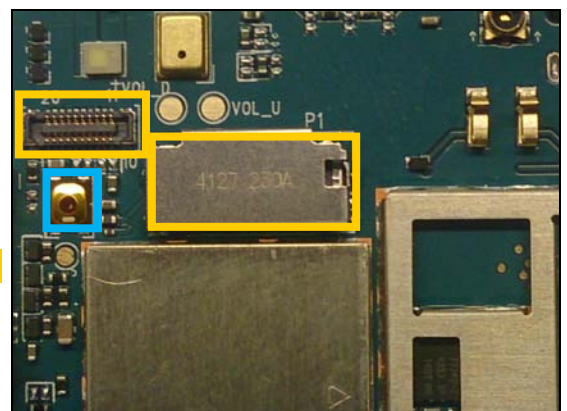
*Replace if mechanical damaged (Grounding Pins)*



**16**

**SW1401**

*Replace if mechanical damaged (Reset not possible)*



## Repair Actions: Additional Repair Info

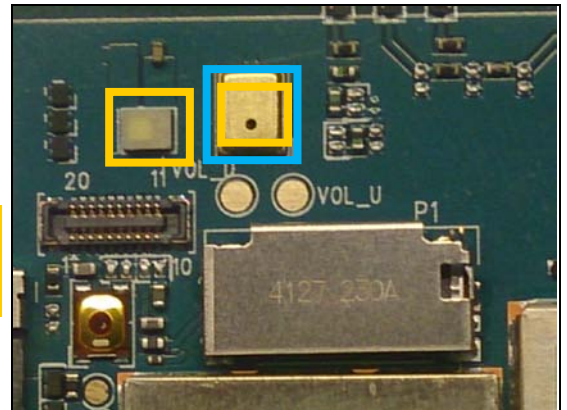
17

U800

*Replace if no audio from 2 mic.*

*Protect the LED with capton tape!*

*When replacing protect 2. mic with capton tape!*



## 4 Revision History

Rev.	Date	Changes / Comments
1	2014-09-09	Initial release
2	2014-09-16	Added component Placing document